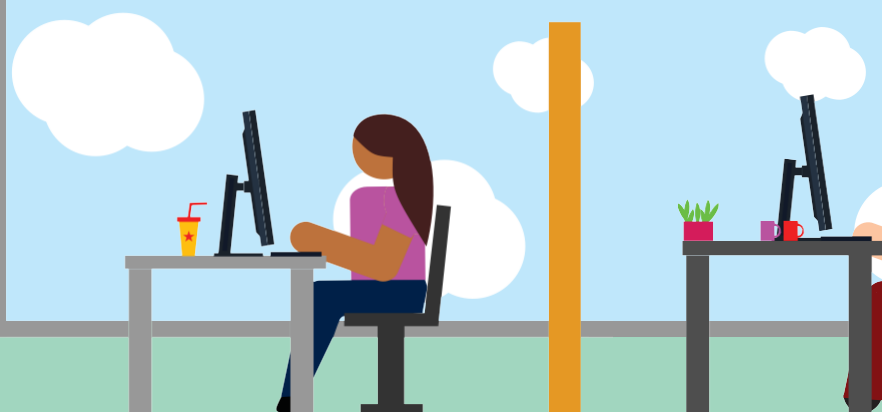


CAREER PATHS IN Government and Public Administration



4-YEAR OR MORE COLLEGE DEGREE AND/OR EQUIVALENT EXPERIENCE

Emergency Management Directors \$40.32	Urban and Regional Planners \$40.12
Compliance Officers \$39.47	Occupational Health and Safety Specialists \$40.44
Property Appraisers and Assessors \$38.95	Statistical Assistants \$31.17
Financial Examiners \$41.17	



HIGH SCHOOL DIPLOMA OR EQUIVALENT

Occupational Health and Safety Technicians \$31.43	Eligibility Interviewers, Government Programs \$30.82
Court, Municipal, and License Clerks \$24.68	Transportation Inspectors \$41.25



These jobs are in demand in Minnesota and these are Minnesota median wages. Data collected from Department of Employment and Economic Development.



CareerForce
It's your state of success

A proud partner of the
americanjobcenter™
network

Provided for you by the Minnesota
Rural Career Counseling
Coordinators (RC3 Grant)



View videos of workers in these occupations:
<https://www.careeronestop.org/videos/careervideos/career-videos.aspx>

CAREER PATHS IN Government and Public Administration

4-YEAR OR MORE COLLEGE DEGREE AND/OR EQUIVALENT EXPERIENCE

Emergency Management Directors \$40.32 Plan and direct disaster response or crisis management activities, provide disaster preparedness training, and prepare emergency plans and procedures for natural (e.g., hurricanes, floods, earthquakes), wartime, or technological (e.g., nuclear power plant emergencies or hazardous materials spills) disasters or hostage situations.

Compliance Officers \$38.47 Examine, evaluate, and investigate eligibility for or conformity with laws and regulations governing contract compliance of licenses and permits, and perform other compliance and enforcement inspection and analysis activities not classified elsewhere.

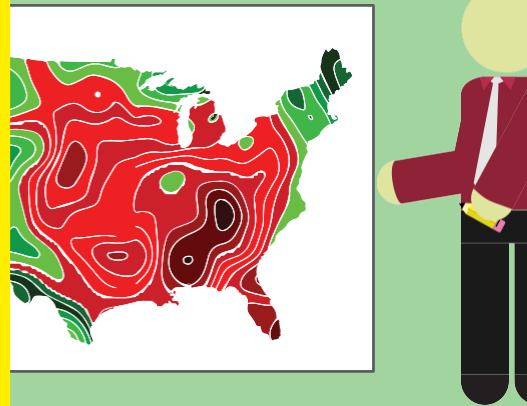
Property Appraisers and Assessors \$38.95 Appraise real property and estimate its fair value. May assess taxes in accordance with prescribed schedules.

Financial Examiners \$41.17 Enforce or ensure compliance with laws and regulations governing financial and securities institutions and financial and real estate transactions. May examine, verify, or authenticate records.

Urban and Regional Planners \$40.12 Develop comprehensive plans and programs for use of land and physical facilities of jurisdictions, such as towns, cities, counties, and metropolitan areas.

Occupational Health and Safety Specialists \$40.44 Review, evaluate, and analyze work environments and design programs and procedures to control, eliminate, and prevent disease or injury caused by chemical, physical, and biological agents or ergonomic factors. May conduct inspections and enforce adherence to laws and regulations governing the health and safety of individuals. May be employed in the public or private sector. Includes environmental protection officers.

Statistical Assistants \$31.17 Compile and compute data according to statistical formulas for use in statistical studies. May perform actuarial computations and compile charts and graphs for use by actuaries. Includes actuarial clerks.



HIGH SCHOOL DIPLOMA OR EQUIVALENT

Occupational Health and Safety Technicians \$31.43 Collect data on work environments for analysis by occupational health and safety specialists. Implement and conduct evaluation of programs designed to limit chemical, physical, biological, and ergonomic risks to workers.

Court, Municipal, and License Clerks \$24.68 Perform clerical duties for courts of law, municipalities, or governmental licensing agencies and bureaus. May prepare docket of cases to be called; secure information for judges and court; prepare draft agendas or bylaws for town or city council; answer official correspondence; keep fiscal records and accounts; issue licenses or permits; and record data, administer tests, or collect fees.

Eligibility Interviewers, Government Programs \$30.82 Determine eligibility of persons applying to receive assistance from government programs and agency resources, such as welfare, unemployment benefits, social security, and public housing.

Transportation Inspectors \$41.25 Inspect equipment or goods in connection with the safe transport of cargo or people. Includes rail transportation inspectors, such as freight inspectors; rail inspectors; and other inspectors of transportation vehicles, not elsewhere classified.

