

CAREER PATHS IN CONSTRUCTION

4-YEAR OR MORE COLLEGE DEGREE AND/OR EQUIVALENT EXPERIENCE



Architectural & Engineering Manager
\$78.24

Civil Engineer
\$48.92

Construction Manager
\$49.96



1-2 YEAR COLLEGE DEGREE OR APPRENTICESHIP

Carpenter
\$29.41
Electrician
\$32.52

Heating, Air Conditioning, & Refrigeration Mechanic & Installer
\$31.27

Plumber, Pipefitter, & Steamfitter
\$39.89



HIGH SCHOOL DIPLOMA OR GED / ON-THE-JOB TRAINING



First Line Construction Worker Supervisor
\$40.29

Operation Engineer/ Construction Equipment Operator
\$32.16

Construction Laborer
\$23.68

Painter, Construction, & Maintenance
\$24.64

Cement Mason/ Concrete Finisher
\$30.30

Highway Maintenance Worker
\$27.63

These jobs are in demand in Minnesota and these are Minnesota median wages. Data collected from Department of Employment and Economic Development.



WHY CHOOSE A CAREER IN CONSTRUCTION?



- Steady, booming industry
- Fulfilling career choice
- Abundant opportunities
- Feel a sense of accomplishment
- Make an impact on your community
- Stay in shape
- Earn a great income

A proud partner of the
americanjobcenter[®]
network

CareerForce
It's your state of success

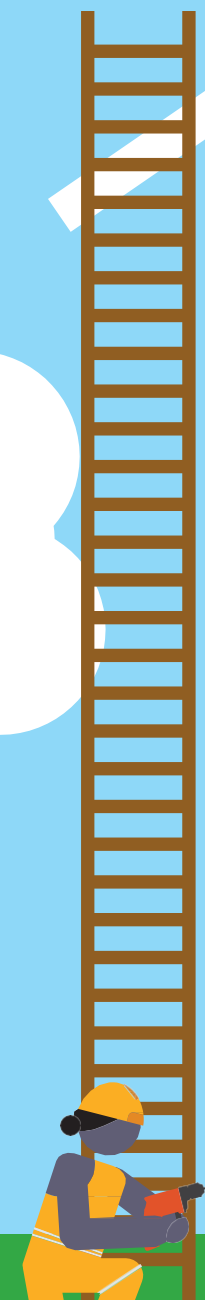
Provided for you by the Minnesota Rural Career Counseling Coordinators (RC3 Grant)



View videos of construction workers in these occupations:

www.careeronestop.org/Videos/CareerVideos/career-videos.aspx

Central Minnesota Jobs and Training Services, Inc. and Career Solutions are Equal Opportunity Employer and Program Providers. Upon request the information in this document can be made available in alternative formats. Contact Angie Dahle at angie.dahle@CSJobs.org or Leslie Wojtowicz at lwojtowicz@cmjts.org or at 1-800-284-7425



CAREER PATHS IN CONSTRUCTION



4-YEAR OR MORE COLLEGE DEGREE AND/OR EQUIVALENT EXPERIENCE

ARCHITECTURAL & ENGINEERING MANAGER \$76.24

Plan, direct or coordinate activities in such fields as architecture, engineering or research and development.

CIVIL ENGINEER \$48.92 Perform engineering duties in planning, designing, and overseeing construction and maintenance of building structures, and facilities, such as roads, railroads, airports, bridges, harbors, channels, dams, irrigation projects, pipelines, power plants, and water and sewage systems. Includes architectural, structural, traffic, ocean, and geo-technical engineers.

CONSTRUCTION MANAGER \$49.96 Plan, direct or coordinate, usually through subordinate supervisory personnel, activities concerned with the construction and maintenance of structures, facilities, and systems. Participate in the conceptual development of a construction project and oversee its organization, scheduling, budgeting, and implementation. Includes managers in specialized construction fields, such as carpentry or plumbing.

1-2 YEAR COLLEGE DEGREE OR APPRENTICESHIP

CARPENTER \$29.41

Construct, erect, install or repair structures and fixtures made of wood, such as concrete forms; building frameworks, including partitions, joists, studding, and rafters; and wood stairways, window and door frames, and hardwood floors. May also install cabinets,

siding, drywall and batt or roll insulation.

ELECTRICIAN \$32.52

Install, maintain, and repair electrical wiring, equipment, and fixtures. Ensure that work is in accordance with relevant codes. May install or service street lights, intercom systems or electrical control systems.

HEATING, AIR CONDITIONING & REFRIGERATION MECHANIC AND INSTALLER \$31.27

Install or repair heating, central air conditioning or refrigeration systems, including oil burners, hot-air furnaces, and heating stoves.

PLUMBER, PIPEFITTER, & STEAMFITTER \$39.89

Assemble, install, alter, and repair pipelines or pipe systems that carry water, steam, air, or other liquids or gases. May install heating and cooling equipment and mechanical control systems. Includes sprinkler fitters.



HIGH SCHOOL DIPLOMA OR GED AND / OR EXPERIENCE

FIRST LINE CONSTRUCTION WORKER SUPERVISOR \$40.29

Direct construction personnel. Coordinate construction project activities. Review blueprints. Inspect equipment.

OPERATING ENGINEER / OTHER CONSTRUCTION EQUIPMENT OPERATOR \$32.16

Operate one or several types of power construction equipment, such as motor graders, bulldozers, scrapers, compressors, pumps, derricks, shovels, tractors or front-end loaders to excavate, move, and grade earth, erect structures or pour concrete or other hard surface pavement. May repair and maintain equipment in addition to other duties.

CONSTRUCTION LABORER \$23.68

Perform tasks involving physical labor at construction sites. May operate hand / power tools such as air hammers, earth tampers, cement mixers, small mechanical hoists, surveying and measuring equipment, and a variety of other equipment and instruments. May clean and prepare sites, dig trenches, and set braces to support the sides of excavations.

CEMENT MASON / CONCRETE FINISHER \$30.30

Smooth and finish surfaces of poured concrete, such as floors, walks, sidewalks, roads, or curbs using a variety of hand and power tools. Align forms for sidewalks, curbs, or gutters; patch voids; and use saws to cut expansion joints..

HIGHWAY MAINTENANCE WORKER \$27.63

Maintain highways, municipal and rural roads, airport runways, and rights-of-way. Duties include patching broken or eroded pavement, repairing guard rails, highway markers, and snow fences. May also mow or clear brush from along roads or plow snow from roadway.

PAINTER, CONSTRUCTION, & MAINTENANCE \$24.64

Paints walls, equipment, buildings, bridges, and other structural surfaces using brushes, rollers, and spray guns. May remove old paint to prepare surface prior to painting. May mix colors or oils to obtain desired color or consistency.

